

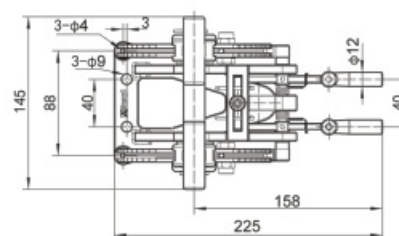
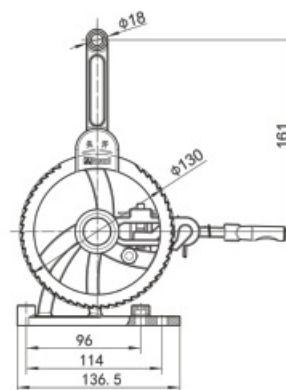
LPG Remote Control Device (Double-ratchet Structure) is a device for remote control of liquid and gas valves in LPG liquid tank. This product can realize remote control of two valves and emergency cut-off function at the same time. In addition, three-ratchet LPG remote control specification device can be selected.

Part No.: YK070001-01-00

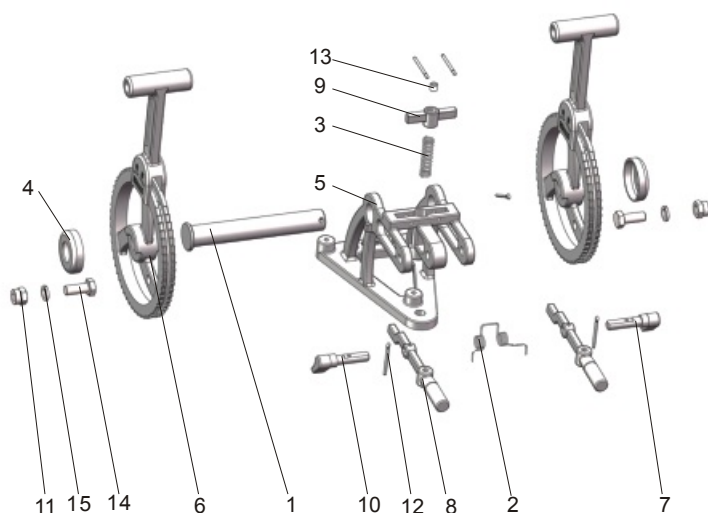
Connection: 3 × M8 Bolted connection

Material: CF8

Fitting Details



Part Drawing



Item	Part No.	Description
1	YK070001-01-06	Bottom Bracket
2	YK070001-01-07	Double Torsion Spring
3	YK070001-01-08	Spring
4	YK070001-01-09	Stuffing Clamp
5	YK070001-01-01	Pedestal
6	YK070001-01-02	Ratchet
7	YK070001-01-03	棘Pawl-1
8	YK070001-01-04	Handle
9	YK070001-01-05	Limited Block
10	YK070001-01-12	Pawl-2
11	85985500M8	Cap Screw
12	859860002.5*25	Split Pin
13	YK070001-01-11	Sealing
14	YK070001-01-10	Drilling Bolts
15	8596811008	Spring Washer