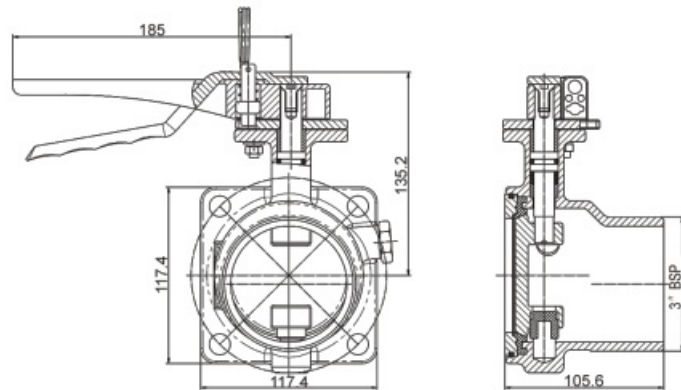


## 3" II Unify Butterfly Valve



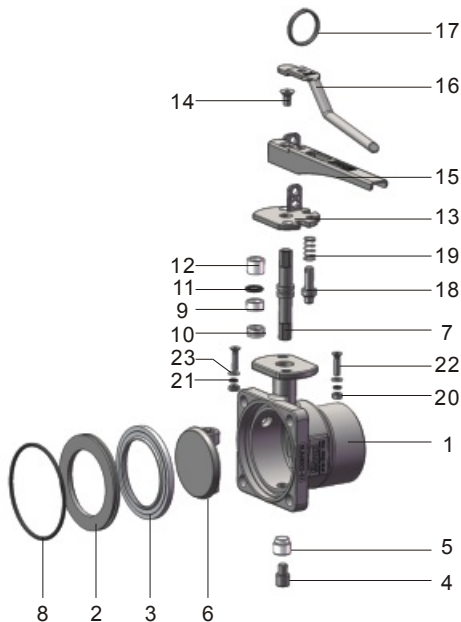
3" II Unify Butterfly Valve—Inlet  $4 \times \phi 14 \times \text{PCD}130$ , Outlet 3" BSP. Left open, with lead seal hole, location pin and Multistage seal on spindle, prevents leaks during transport.

### Fitting Details



Part No. : DLB68002-00  
 Connection: Inlet  $4 \times \phi 14 \times \text{PCD}130$   
 Outlet 3" BSP  
 Nominal Diameter: 80mm  
 Nominal Pressure: 6Bar  
 Contact Parts: 316  
 Fitted with PTFE seal  
 Design Temperature:  $-40^{\circ}\text{C} \sim 200^{\circ}\text{C}$

### Part Drawing



Parts marked in red belong to the seal kit SNSD8001.  
 Parts marked in blue belong to the seal kit SNMD8001.

Item	Part No.	Description
1	DLB68002-01	Body
2	DLJ68001-02	Seal Clamp Plate
3	DLJ68001-03	Main Seal
4	DLJ68001-04	Bottom Spindle
5	DLJ68001-05	Bottom Bush
6	DLJ68001-06	Closure Plate
7	HDD48001-03	Spindle
8	DLJ68001-08	O-Ring
9	DLJ68001-19	PTFE Bearing
10	DLJ68001-18	Packing
11	DLJ68001-10	O-Ring
12	DLJ68001-09	Split Bearing
13	DLJ68001-11	Stuffing Clamp
14	85988800M8*16	Countersunk Setscrew
15	DLJ68001-12	Handle
16	DLJ68001-13	Operating Lever
17	DLJ68001-16	Split Ring
18	DLJ68001-14	Handle Location Pin
19	DLJ68001-15	Handle Location Spring
20	85984400M6	Nut
21	859811006	Spring Washer
22	85988800M6*25	Countersunk Setscrew
23	859810006	Plain Washer