

PFA Lined Safety Relief Valve are suitable for pressure ranges from 1.5 to 106.1 PSI (0.1 to 7.31 Bar) for pressure and from 0 to 3 PSI (0 to 0.21 Bar) for vacuum. The whole body is made of stainless steel, and the contact parts of the medium is lined with PFA, and the contact parts are made of PTFE. This kind of relief valve has strong anti-corrosion ability.

Fitting Details

Part No. AFXXXXXXXXXX

Connection:

Flange 4 × $\phi 18 \times$ PCD145 ~ 152.4/PCD160

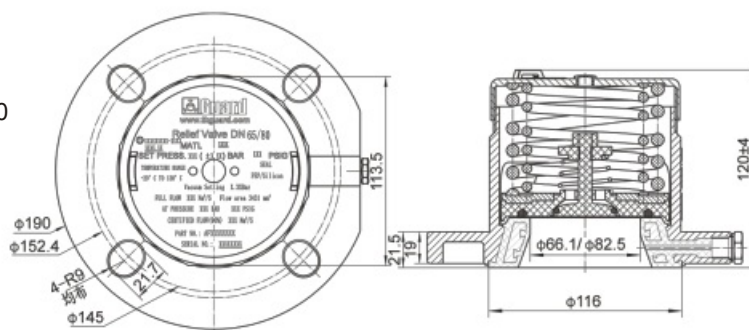
Nominal Diameter: DN80/DN65

Nominal Pressure: PN10

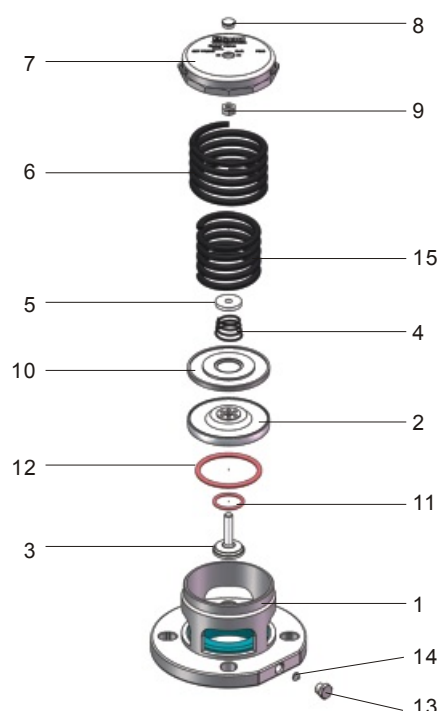
Design Temperature: -20°C ~ 130°C

Contact Parts: PFA/PTFE

Seal: PFA/PTFE



Part Drawing



Item	Part No.	Description
1	AFXXXXXXXXXX-01	Body (PFA)
2	AFXXXXXXXXXX-XX	DN65/80 Pressure Plate
3	APB46501-04	PTFE Vacuum Poppet
4	AF6503752101-03	Spring (Halar)
5	AF6503001001-04	Vacuum Poppet
6	AFXXXXXXXXXX-XX	Spring (Halar)
7	AFXXXXXXXXXX-XX	Cap
8	AMF46501-05	Plastic Plug
9	AF6503001001-05	Nut
10	AF8001502101-03	Supporting Plate
11	APB46501-11	31.3*3.53 Encapsulated O-ring
12	AMF46501-03	68*5.33 Encapsulated O-ring
13	AF6503000001-03	1/4" Plug
14	AF6503000001-04	Washer
15	AFXXXXXXXXXX-XX	Spring